

Garden Highlights, January 2023



The Geelong Botanic Gardens has 23 of its trees Heritage-listed. You can borrow Self-Guided walk information on these trees from the Gardens Front Gate.

One of these trees is the **Maiden Hair Tree *Ginkgo biloba*** shown in the photo. This is probably one of the first Ginkgoes to grow in Australia for nearly 40 million years. 110 million year old fossil Ginkgoes were found in the Otways. (At that time Victoria was south of the Antarctic Circle, but had a cool, temperate climate.) This tree, from China, was planted in the late 1850s. It has a feature that appears when Ginkgoes have experienced drought or are older than 300 years. It is the beginning of roots, called Chi Chis, growing from the branches and trunk. These give the appearance that the tree is weeping.

Over page: Map showing plant locations

What's On in January 2023

Discovery Table:

Sunday 15 January 1 - 3 pm.

Free Guided Walks:

Wednesdays 11 am, Sundays 2 pm, except 1 January.

Friends Nursery open:

Wednesdays 9:30 am - 12:30 pm.

Botanic Art Calendar 2023,

Members \$18.00, Non-members \$22.00. Order online or phone.

Botanic Art, 2 and 3 day

Workshops, 7 and 20 January, Website for details and bookings.

The Conservatory is open every day: 9 am - 4 pm.

(For more details about What's On: Friends website or phone.)

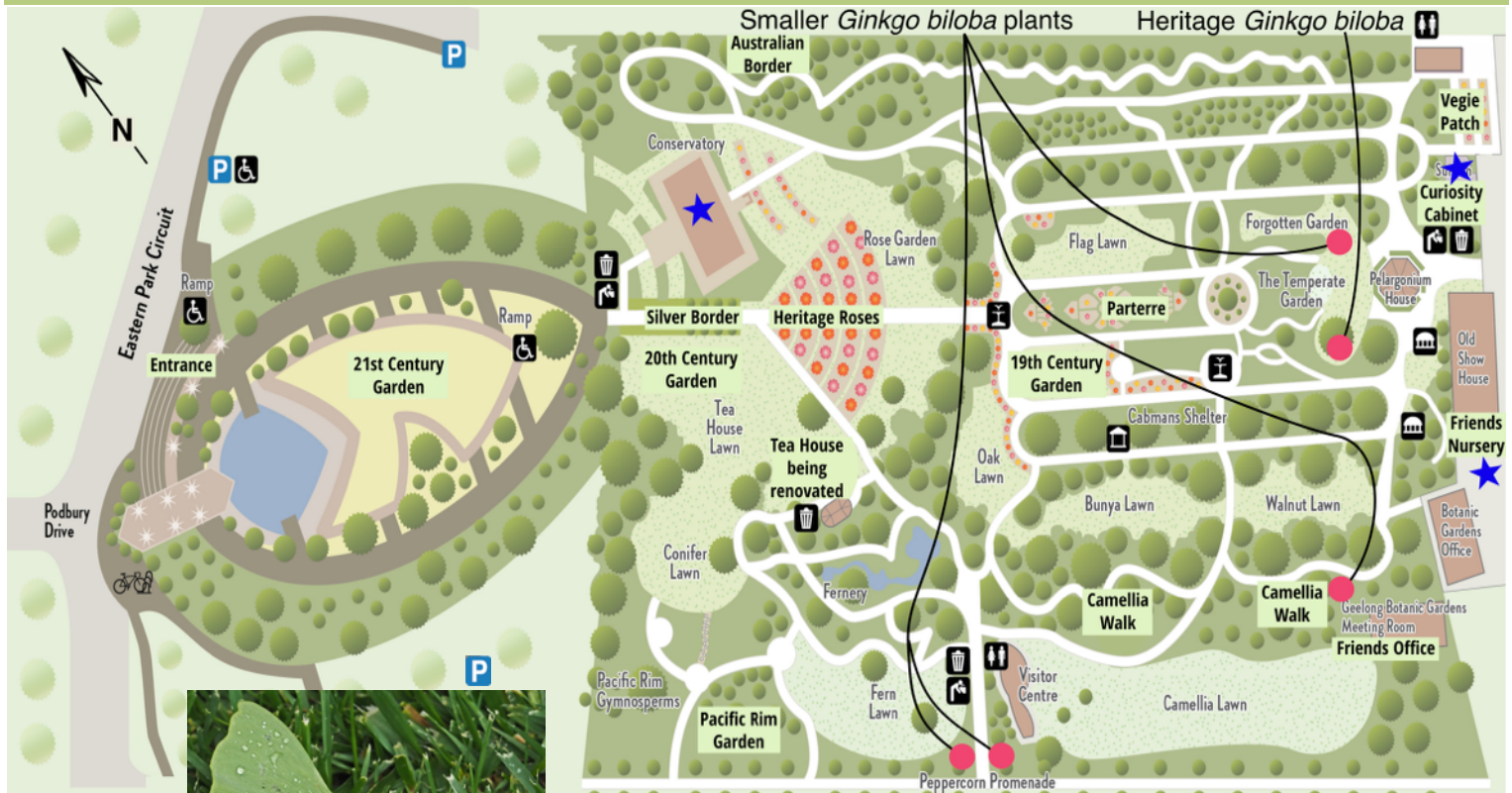
Bookings: www.friendsgbg.org.au

Phone: 5222 6053

www.geelongaustralia.com.au/gbg/



Geelong Botanic Gardens map



A leaf of *Ginkgo biloba*

This information was developed by the Volunteer Guides
 Friends of Geelong Botanic Gardens.
www.friendsgbg.org.au
www.geelongaustralia.com.au/gbg/

