

# Jubaea

Friends of Geelong Botanic Gardens Inc. Newsletter

October 2024 Volume 24 Issue 3



FRIENDS OF  
GEELONG  
BOTANIC  
GARDENS



*Puya ferruginea* located in the 21<sup>st</sup> Century Garden and the 19<sup>th</sup> Century Garden. Photo: David Johnson, FGBG Guide

## GARDEN HIGHLIGHT – *Puya ferruginea*

*Puya ferruginea* is native to Peru, Bolivia and Ecuador in the South American tropics, where it grows at high latitude. These flowers are pollinated at night by bats. To attract bats, the flowers are pale in colour making them more visible at night and are on long stems to allow the bat's sonar to be unimpeded by plant leaves.

The individual flowers are on short stalks, so they don't sway too much, and are tubular to suit the shape of the bat's mouth. They are easy for a bat to reach when it is hanging from the main flower stem, as the flowers hang down. Bird pollinated flowers usually stand more upright.

At night, a flower on each main stem opens wide, making it easier for bats to find it with sonar. It also produces a bat-attracting odour and rewards a visiting bat with rich, sweet nectar. After flowering, the flower rolls up tightly. This may help bats to avoid wasting energy visiting flowers that no longer offer a reward.

Later in the year, **Sapphire Tower *Puya alpestris***, will display turquoise flowers in other parts of the gardens.

For a location map of the *Puya ferruginea* and more Garden Highlights go to [www.friendsgbg.org.au](http://www.friendsgbg.org.au)



# VISITING MELTON BOTANIC GARDEN

On Thursday 12 September, 35 intrepid members and friends drove to Melton Botanic Garden. President, John Bentley and many volunteers were there to greet us with refreshments. Following morning tea and a welcome, John gave us a guided tour of the Southern section of the Botanic Gardens. The botanic garden is almost 20 years old, so has many well-established plants.



Looking from the amphitheatre through the herbaceous window

The park includes areas of remnant indigenous grassland and woodland along Ryans Creek, and a lake at the divergence where it meets Toolem Creek. The gardens collections are arranged in a diversity of separate planted areas, including plants bearing Indigenous bushfoods, South African, West and South Australian, Californian and South American succulents.



John Bentley welcoming the visitors and outlining the timetable for the 5-hour tour and lunch

John explained that until now the garden has been managed by the Friends of Melton Botanic Garden. Funding has been obtained over the years through many grants. Currently a strategic plan is being formulated with the Melton Council which includes a proposal to have a salaried Curator and two staff. Until now volunteers have been responsible for establishing and maintaining the gardens.

The climate at Melton has much lower rainfall than Melbourne hence the need to focus on plants from Africa and Australia which flourish in dry conditions. New plantings are watered regularly for the first two years until they are established.

At midday we met at the Friends' shed at the north end of the garden where we were served a delicious lunch by volunteers. After lunch there was time to browse and purchase plants in the nursery.



View across the main lake

In the afternoon John was again our guide, this time through the northern section of the garden. The collection varies greatly in the northern part of the botanic garden.

For example, there are 4 arboretum areas of eucalypts. With approximately 100 different species on display.



Tour group being guided by John Bentley

Tour participants were impressed by what has been achieved by volunteers. Their passion, dedication, and time commitment has achieved this amazingly extensive garden which was a delight to visit.

John Bentley summed up the importance of visits such as this "It's good to have collaboration with other Friends groups, we learn a lot from each other."

*Denise Feldman*

# GEELONG SCHOOL OF BOTANICAL ART

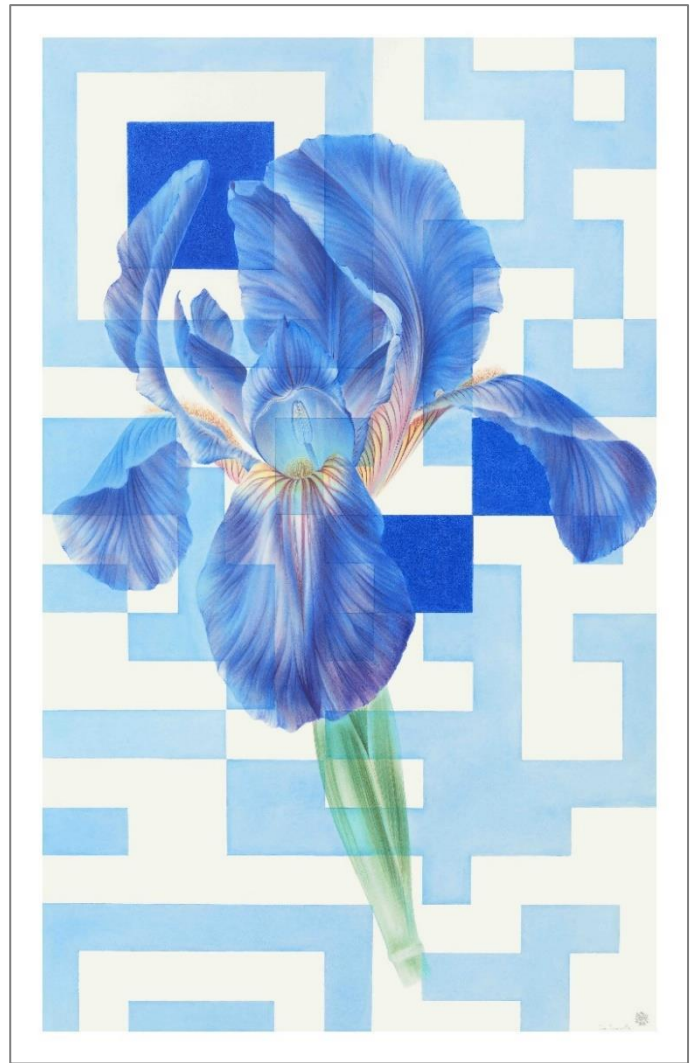
John Pastoriza-Pinol is one of our highly regarded Botanical Art tutors at Geelong School of Botanical Art and we are so proud to announce that John's contemporary artwork 'Iris x germanica' was chosen as a finalist artwork for the Geelong Contemporary Art Prize - now exhibited at Geelong Gallery with the other amazing artworks.

The exhibition is open daily until 3 November. Contact Geelong Gallery for more information.

Well Done John!!



John Pastoriza Piñol with Iris x germanica Lost Love



iris x germanica

## BOTANICAL ART CLASSES AND WORKSHOPS

Geelong School of Botanical Art offers an exciting variety of fine art classes, all in the location of the wonderful Geelong Botanic Gardens

Term 4 Classes:

MONDAY CLASSES – In-Person

**Large Scale Flower Studies**

Tutor: Amanda Blake Sutterby

FRIDAY CLASSES – In-Person

**Intermediate Botanical Art Class**

Tutor: Craig Lidgerwood

FRIDAY CLASSES – In-Person

**Beginners Botanical Art Class**

Tutor: Craig Lidgerwood

SATURDAY CLASSES – In-Person

**Advanced to Semi Professional Botanical Art**

Tutor: John Pastoriza-Pinol

4 DAY WORKSHOP:

**Introduction To Botanical Art Using Graphite And Coloured Pencil**

Tutor: Amanda Ahmed

Weekend 1: Introduction to Drawing with Graphite, Saturday 12 and Sunday 13 October

Weekend 2: Introduction to Drawing with Coloured Pencil, Saturday 26 and Sunday 27 October



MORE INFORMATION: [www.friendsgbg.org.au](http://www.friendsgbg.org.au)

**BOOKINGS ESSENTIAL:**

Please contact the Friends' Office on 5229 0071 or [info@friendsgbg.org.au](mailto:info@friendsgbg.org.au)



# FGBG ANNUAL REPORT 2023-24

The Financial Year 2023-24 has been one of adjustment. The Committee has reviewed the role of the Friends over the past 39 years which allowed us to see how we have evolved to become the not-for-profit organisation we are today. The Friends of 39 years ago was very different from the Friends of today, but it is still a vibrant organisation advocating and supporting the Gardens. Into the future the Friends will need to continue to evolve to ensure that we remain a vibrant, viable and vital entity fulfilling our roles and purposes in supporting the Gardens. We will take our learnings from the past, retain all the positives of our group and consider the changes we will need to make as we move forward and continue to evolve.

One area we have already reviewed is our policies and procedures. We have updated many of our policies and procedures, including *Work Health & Safety*, *Code of Conduct*, *Child Safety* and *Funds Management* and added new ones which comply with current legislation. These include *Privacy*, *Confidentiality*, *Diversity and Inclusion*. The Australian Charities and Not-for-profits Commission (ACNC) has required the introduction of policies regarding *Conflict of Interest*, *Cybersecurity*, *Electronic Data Management* and *Social Media*.

Thanks to the hard work of our staff, we have completed our transition to a new on-line membership management system known as *TidyHQ*. This has enabled us to streamline membership renewal and event booking processes making it more efficient. Also, *TidyHQ* enables us to better manage our mailing lists which now include regional Garden Clubs and similar organisations. There are many more features in *TidyHQ*, such as webpage and newsletter management, which will begin to explore in the future.

We have also now completely ceased our COVID era of online activities and replaced them with face-to-face lectures and classes. This has been appreciated by our members who have enjoyed having opportunities to meet and share these experiences.

The *Friends Gift Fund* is distributed to projects and programs within the Gardens. The Treasurer report will give more detail. Any requests for a specific purpose (such as a water fountain or a memorial seat) are now referred to the City who have policies and procedures to manage these requests.

## THE FRIENDS COMMITTEE OF MANAGEMENT

In the 2023-24 Financial Year eleven Committee meetings were held as well as several special Committee meetings. At the regular meetings we received reports from the various Friends subcommittees. We also received verbal reports from the GBG Coordinator, passed on by our Secretary, on a regular basis. The GBG Coordinator also provided face-to-face reports to several Guides meetings.

## MEMBERSHIP AND VOLUNTEERS

The membership number of the Friends has dropped the past 12 months currently being 255. As of 30 June 2024, 70 members had not yet renewed their membership. The number of volunteers has remained steady. With a 39-year-old organisation such as ours we are sadly beginning to lose some of our foundation members, and this is reflected in our numbers.

## WORKPLACE HEALTH AND SAFETY (WHS)

A highlight of WHS this year is the ongoing development of an effective and readily accessible communication channel, by which any volunteer can express concerns or participate in discussions about possible WHS issues.

Several factors may have facilitated this, being, not in any order of importance;

- The implementation of regular three-monthly WHS meetings open to all Friends volunteers
- The selection of a WHS representative to attend an initial OHS Training Course at the Gordon TAFE East Geelong campus.
- Representatives of the Friends working together with the City to align WHS policies and procedures of the FGBG with those of the City. Into the future this will make a more effective, simpler and accessible system.

*Charles Pond, Elected WHS Officer*

## GEELONG SCHOOL OF BOTANICAL ART

In November 2023 we held the *Inspired by Nature 7* exhibition at Deakin University Waterfront Campus gallery, adjacent to the Alfred Deakin Library. Over seventy botanic works were on display. Belinda Taylor won the *Best Emerging Artist* award and Nicky Coats *Best in Show* award. Once again, the exhibition was well attended. We appreciated the contribution of Deakin University for the use of their gallery for five weeks. Gift vouchers were donated by the *Frame Factory* and *Cavalier Art Supplies*. In addition, we greatly appreciated the provision of wine for the opening night from *Scotchman's Hill Winery*. Our sincere thanks to our four Tutors for their support and advice in assisting their students to prepare for the exhibition. Pammi Prior, Botanic Art Coordinator, steered the preparation and day to day running of the exhibition in a highly professional manner which made the process achievable for our staff and volunteers.

This year Amanda Ahmed took sabbatical leave with assurances that she will be back. We look forward to Amanda's return and her much valued tutoring in graphite and coloured pencil.

Blackberries, sweet chestnuts, turkey acorns, liquid amber seed pods – all things prickly and spiny, softened by lovely leaves and luscious florals were the varied subject matter for classes this past term. Our Tutors do like to challenge their students and as a result even the most experienced and talented of our

artist/students continue to learn so much! Wintertime sees many of our students heading for holidays in the warmth.

All images for inclusion in our much-anticipated *2025 Desk Diary* have been received from our students and tutors. Thank you to Deb Chirside and Amanda Blake-Sutterby for selecting the images and it is heartening to see all who submitted images will have some of their work represented. Thank you too to Jayne Salmon and Judy Fyfe for their unenviable work in checking the plant names and finding the correct ones for those more elusive plants. Work progressed well, putting it together ready for printing.

Progress regarding the establishment of a florilegium is perhaps moving more slowly than some of us may wish, but we are awaiting responses from outside sources. Hopefully our patience will be rewarded. Our tutors and some students continue to contribute their work to other florilegia in Australia and overseas as well as exhibiting their work nationally and internationally. Some tutors also run classes for the Friends of the Royal Botanic Gardens Melbourne and other venues in Australia and overseas. *The Wagtails*, a group of experienced artists, struggled to meet on a regular basis due to the Friends Building Licence no longer allowing them use of the Meeting Room on Wednesday afternoons. Negotiations are currently in progress to review room use for this group.

*Pammi Pryor, GSBA Coordinator*

## GROWING FRIENDS



Judy Fyfe and Liz Bennetto were co-coordinators from July-December 2023. The plan is for two coordinators in the role for a twelve-month period. We would like to thank them for being coordinators of the nursery at short notice and managing the difficult transition following the retirement of Leanne Barnes. They continue to be a source of inspiration and help.

We thank and acknowledge the staff of the Geelong Botanic Gardens, who work with nursery volunteers in a collegial spirit. Requests for plant material, potting mix and fertiliser are dealt with in an efficient way, and we look forward to nourishing this good relationship.

The strength of the grower's group is the knowledge and experience they bring to the nursery. Everyone brings a different lived experience coming from a diverse cross section of the community. The growers' resilience and camaraderie make coming to the nursery a joy for all concerned. The public visiting the nursery get this vibe and enjoy their visit and we continue to be an important gateway to the Geelong Botanic Gardens.

A healthy, robust range of plants continue to be propagated representing a diverse cross-section of the plants grown at the Geelong Botanic Gardens.

We are strong advocates of GBG and direct visitors to where they can see mature specimens of the plants we grow and share experiences of growing the same plants in their gardens.

We grow and supply plants that are not available elsewhere in Geelong at very good prices. Pelargoniums, geraniums, salvias, perennials, grasses, succulents and much more are grown to a high standard by knowledgeable volunteers, who have specialised in a particular type of plant and provide an amazing resource of information in their field.

This diverse range of specialised expertise is shared with the public, especially on sales days. Visitors come seeking help with plants and are given good advice or helped where to where to find answers to their questions.

*Norma Shepherd & Bruce McGinness, Nursery Coordinators*

## HERITAGE ROSE GROWERS



Our Rose Group numbers have shrunk to just six but we are covering the main tasks with help from the Gardens staff.

Tasks during summer were deadheading and tidying. Summer pruning was undertaken by Rose Group and the Gardens staff (Claude).

Winter pruning happened in July with a combined effort of the Gardens staff, Rose Group and Weeders Group. The day was very productive with beds 1, 2, and 3 completed. The Rugosas will be pruned in August. Some replacement of special roses is necessary, and sourcing these types of roses continues to be



difficult. It will be addressed in 2025; special orders will be placed in January to be propagated and delivered in winter.

Our main event for the year was the *Rose Lovers Day* we held in November which was a great success, and the roses looked magnificent. Speakers featured Jane Edmanson and eminent rosarians, Peter Ades and John Nieuwesteeg. Two publications were produced in time for this event- the *Rose Lovers Calendar* for 2024 and the *Rose Lovers Guide* about the Heritage Roses at the Gardens.

*Margaret Ward, Heritage Rose Growers Team Leader*

## WEEDERS



- The amount of weed regrowth throughout the gardens has significantly decreased as we revisit areas previously worked on.
- There is great camaraderie within the group.
- The team has developed a strong working relationship with the Gardens staff.
- Our role has broadened and we have assisted the Rose Growers at pruning time and assisted the Gardens staff with massed planting and harvesting vegetables which are sent to Geelong Food Relief
- Being out in the Gardens we are very visible and have frequent interactions with the public, promoting the gardens - a valuable ambassadorial role.
- The grant secured by the Friends for uniforms will identify our volunteers which will enable visitors to the Gardens to be clearer about our role.

*Marg Oates, Weeders Team Leader*

## LIBRARY

Our small band of volunteers shrank by two this year. Meralyn Roberts retired from regular work owing to health concerns. She has worked for the Friends and GBG Library for over 20 years and her knowledge of the early history has been very valuable. During her time, she compiled various photo books and books of newspaper and magazine cuttings about the Friends and their activities, as well as information about the GBG. A valuable resource for our history. Dale Gordon joined to share her editing prowess but has taken temporary leave of absence. We look forward to her return in good health later. Nadia Zacchigna has taken on the role of keeper of history and indexes each issue of

*Jubaea* as well as reading meeting minutes to collect information for our Friends' historical timeline.

Recent changes to the library work arrangements have meant the loss of our editing program *Adobe In Design*, which had come with the second-hand library computer purchased from the Inverleigh Progress Association. The program, originally purchased by the association did not transfer to the new computer, requesting us pay a subscription. It has meant we had to transfer the work into MS Word which is OK but not perfect as yet.

## LIBRARY



After much negotiation by the Committee, we still have the library catalogue available near the library shelves for users to look up material and do any database management. No extra material can be kept in desk drawers, which is not ideal, but we are managing. The Guide's material was moved from their regular shelves to another bay which is tidier and has more space. The Guides need their resources to be readily available if they are to research walks etc. We have not been buying much material for the library, but occasionally receive donations which we can keep or sell at plant sales, if conditions are favourable. Investigations are underway into a more modern catalogue, but there is a bit of uncertainty about the future of the library.

Decisions to be made are how we publish the Timeline and other possible celebrations for 40 years of the Friends. Thoughts are for a small cookbook of favourite shared recipes enjoyed by our group with botanical art images.

*Luanne Thornton, Library Team Leader*

## EVENTS

Promotion and public engagement are the cornerstones of success for any institution. With the continued demise of horticulture-based community groups in the region, the role of the *Friends' Events Programme* takes on increased importance. Provision of events which promote public engagement, education and recreation involving Geelong Botanic Gardens and horticulture, has always been core to the Friends' purposes. The social focus on environmental awareness, and the benefits of being involved with the natural world, is embraced when planning the annual events calendar. All activities aim at

attracting the public to become involved, whilst promoting the Gardens as well as providing social engagement with members. People, plants and the GBG are the reasons for the Friends' existence.

With a large membership base of nearly 300, the Friends are fortunate to be able to draw on the expertise of members to join our subcommittees. The Events team currently has seven volunteers, ranging in age from 23 years to 80+ years, with a range of experience in event planning, catering and networking with external agents. This enables us to bring together fresh ideas as well as old favourites, to form a diverse program that caters for a variety of interests and budgets, but all with horticulture or education at their heart.

Self-drive garden tours are increasingly popular, as they enable easy access for those less mobile or having special needs. The garden tour of four inner Geelong properties attracted 100 participants. Tours also attracting great interest were Beleura historic house and garden in Mornington and a coach tour of the Alister Clark Memorial Rose Garden and Villa Verde Garden in Greenvale. The coach tour to the Otways, with a guided fungi foraging talk and walk through the forest, was informative and very restorative.

The guest speaker program continues our focus on public education, featuring talks as diverse as Friends' patron Stephen Ryan's talk at the AGM about gardening trends and plant selection, Geelong's pioneering vignerons and orchardists by Gail Thomas. In addition, the Winter Lunch was held in the Davidson Restaurant at the Gordon TAFE where the role of botanic art in capturing rare and threatened indigenous plants was the topic of the guest speakers' presentations.

The Friends' Annual Seniors Week event, which this year attracted 100 seniors to the Gardens, is held by the team with financial assistance from the City of Greater Geelong's *Positive Ageing* grant. Morning tea and a guided walk through the Gardens in late summer has become a firm public favourite on our calendar.

A supper with movie night and a cooking demonstration focusing on seasonal produce, are included each year to connect those who can no longer engage in active recreation but need to remain involved with others.

Welcoming major groups to the Gardens with catering provided by the Friends' Events team continued in 2023 until the reopening of the Teahouse. A major contribution to the promotion of the GBG was the Events team catering for the *Botanic Gardens Australia and New Zealand Networking Meeting* at the Gardens. Over 80 delegates were provided with a 3-course meal, and guided walks by the Friends Guides contributed to a very successful meeting hosted by the GBG. Two High Teas were held to welcome new members. These events have several purposes:

- to help new members to feel welcome and valued,

- to provide them with information about the Friends
- for the Friends to learn what attracts new members to the Friends,
- and what skill set members who are interested in volunteering bring with them.

Many thanks to the Events team for another wonderful year of stimulating and engaging events and activities. They are always most appreciated by all who attend and help maintain the high profile of Geelong Botanic Gardens and its most supportive Friends.

*Allison Martland, Events Coordinator*

## THE GUIDES



Thirty-nine years ago, Jayne Salmon was asked to form a Guides group for the GBG to enable visitors to learn about the history of the GBG and its plant collections. Today there are 20 guides who come from a diverse range of backgrounds, but what they have in common is their passion for the GBG and a desire to communicate what they know to visitors.

In the 2023-24 Financial Year the Guides hosted 765 visitors from Australia and overseas. In addition, if no one is at the front gate waiting for a tour, the Guide on duty spends time in the garden making themselves available for visitors to ask questions.

On one Sunday a month for nine months of the Financial Year 2023-2024, David Johnson organised a Discovery Table which displayed a collection of interesting plants, seed pods and flowers for people to view and ask questions. Two hundred and thirty-five people stopped and spent time with David and walked away better informed.

In addition, the Guides provided booked walks for several groups. Several guides retired in the financial year and new guides were recruited and trained.

Despite having the Tea House functioning again our numbers for the walks have not improved. We are very concerned about the lack of publicity for our walks. Since the Gardens have insisted on taking over this role through their own marketing department, publicity about all that the Guides offer has simply not happened.



There has been a distinct lack of signage at the gates, and also no sign of any Self-Guided Walk sheets for those who visit the gardens. The Garden Highlights flyer has had to be abandoned because it cannot be distributed when there are no walks on offer. In general, we are held back by a failure of communication.

We also lost one of our very committed Guides, Annie McGeachy, who has been a volunteer at the gardens for over 40 years as she passed away on the 15 July.

We are hoping that 2025 will see morale amongst the guides improve greatly and we have plans to do training again later in the year as we still need more new guides.

*Gwen Anderson, Guides Coordinator &  
Tilly Bunton, Guides Roster person*

## THE PERENNIAL BORDER



The Perennial Border is a lovely part of the Gardens with something of interest to see every season, but it is at its best in summer and autumn. This year we have been working hard to create a shady border under the large trees to the north. The garden staff did an amazing job to clear the area, removing many Crinum and tree stumps. We sourced plants from near and far, and Julie (Gardens staff) is busy making labels for them. We are hoping that with warmer weather coming it will soon spring to life and look amazing.

*Jan Cheyne, Perennial Border Team Leader*

## SPECIAL PROJECTS:

### Wadawurrung Connection Project

The aim of this project is to establish a strong connection between Geelong Botanic Gardens and the Wadawurrung, by working collaboratively to develop community awareness of Wadawurrung culture, with emphasis on their use of plants for food, medicine and materials, their conservation of resources and their methods of land care. This will be done through enhanced plantings, signage, walking trails and community education. A large sign at the entrance to the Gardens will acknowledge the Wadawurrung and interpretive signage will explain their use of plants. Guided walks will be held regularly, and self-guided walks will be made available on-line via the

website and in hard copy. Celebrations of the project will be held with Wadawurrung and the general community.

The Friends received a grant from the City of Greater Geelong under the *First Nations Cultural Heritage Grants* at the end of 2022 to deliver this project. We have been working with Sheree Parker, Kellee Reissinger and Reese McIlvena from the GBG.

2023 – 2024. The project has progressed slowly during the last year, but we will get there soon. The plantings in the Wadawurrung Resources Bed have done well, but those in the circular bed near the entrance have not thrived. We may need an alternative plan here. We have a Language Agreement with the Wadawurrung Traditional Owners, and they have supplied Wadawurrung names for many of our plants. The Project Steering Group has agreed on the format for plant labels and interpretive signage for the Wadawurrung Resources Bed. Acknowledgement signage at the front gate is still under discussion. Consultations with the Wadawurrung confirmed their preference for a sign in their language indicating that we are on Wadawurrung Country. We are currently in discussion with the City to find a solution which fits with their marketing/signage policies. This should be resolved soon, and the signage completed.

The Guides are working on content for a self-guided walk which will be available on-line and in print. This October's Themed Walk will feature First Nations use of plants.

Wadawurrung Elders will be visiting the Gardens in October to see the plants, talk about the project and suggest ways of involving the First Nations community.

Heartfelt thanks to all the Friends who have supported this project, especially Lynne Clarke, Helen Zournazis, Jane Laidlaw and Denise Feldman.

*Liz Bennetto*

### Volunteers Uniform Grant

Late last year we successfully applied for a grant from the Commonwealth Volunteer funding program. The purpose of the grant was to provide uniform for our volunteers which would improve health and safety (sun, heat/cold and skin protection) as well as make them identifiable to the public while working in the Gardens. We recently supplied all our volunteers with hats, shirts and jackets. This created a lot of excitement amongst the volunteers. All these items have the Friends logo embroidered on them.

### Trail Fountain

This project funded by *Heritage Victoria*, with the approval of the City, has not progressed as the fountain has further deteriorated since the grant application was written. *Heritage Victoria* approved for the grant funding to be spent on a professional assessment of the fountain which would assure its future. Once the structure of the fountain is assured the City will complete further cosmetic functions.



### Closing:

As I now complete my third and final year as President, I would like to thank Treasurers, Barrie Satchell and Judy Fyfe, and Secretary, Rosslyn Jablonsky, who have made the last two financial years much less onerous.

In addition, with the Committee of Management's conscientious input and advice we have been able to maintain the integrity of our organisation through difficult times. We look forward to the future as the City has committed to provide additional support, offering to assist us with training opportunities for volunteers

and advise on how to best market Friends' activities which is in line with the City processes.

My heartfelt thanks go to the Friends' Volunteers who consistently offer their time, knowledge and gardening and horticultural skills at the Geelong Botanic Gardens.

*Denise Feldman, President, FGBG*

## FGBG ANNUAL FINANCIAL REPORT 2023-24

The full audited annual reports are tabled at this meeting and are also available to members from the Friends' office – these are reports for the Friends of Geelong Botanic Gardens and for the Gift Fund which is administered by the Friends.

### Financial Management

- Davidsons continues to provide professional accounting advice and to lodge IAS and PAYG returns when necessary.
- Financial records are maintained by administration staff
- The annual audit is completed by the Audit department of Davidsons.

### Friends of Geelong Botanic Gardens Gift Fund

- The Gift Fund is a separate business entity to the Friends and is reported separately.
- Many members have again taken the opportunity to make a 'tax deductible donation' to the Gift Fund – thank you for these contributions.
- Donations           \$4,763.84           2023/24 cf           \$6,274           2022/2023
- Interest            \$19,188.55           2023/24 cf           \$2,368.83           2022/2023
  - This difference due to timing of Interest being received
- Total Assets are \$414,364.87           June 30, 2024 cf           \$407,568.27           June 30, 2023.

### Contributions to Geelong Botanic Gardens and Eastern Park from the Gift Fund

- \$17,156 has been distributed from the Gift Fund to the Geelong Botanic Gardens during 2023/24:
  - \$3,691           Metal Rounds for garden beds in the Geelong Botanic Gardens
  - \$1,538           Installation of turf outside Conservatory
  - \$3,672           Planter Boxes for Conservatory
  - \$4,730           Purchase of sculptures and plants from Roraima Nursery
  - \$1,543           Support for the Education Program (teaching materials)
  - \$1,982           Purchase of Australian Plants from Kuranga Native Nursery
- This distribution ensures that we are compliant with the Statutory requirement for distribution from a Public Ancillary Fund.

### Friends of Geelong Botanic Gardens

#### Contributions to Geelong Botanic Gardens and Eastern Park from Friends

- This includes the Education Program, some Garden Beds, Projects and the Volunteer Guides:
  - \$880           support for the Education Program
  - \$413           maintenance of the Perennial Border and Rose Garden
  - \$122           support for the Volunteer Guides
  - \$37,486       Wadawurrung Project and Traill Fountain with significant grant monies.
- Volunteer Hours constitute a significant annual contribution by the Friends. This is not quantified or valued in exact dollar terms:
  - Volunteers, such as the Gardeners (Perennial Border, Weeders and Heritage Rose Bed), Librarians and Guides are directly involved in projects and programs within the Gardens

- Volunteers involved with the Committee, The Friends' Nursery, The Geelong School of Botanical Art and Events ensure that the Friends can exist as a viable organisation to support its members and also to support the City, the Gardens and the community.
- Financial support for the activities of these volunteers is ongoing. We received a Federal Grant (\$4,540) to supply some uniform items for our volunteers. The Committee has decided to provide unfunded uniform items to all of our volunteers this year (estimate \$2,500)
- The Wadawurrung Project received the first component of the grant (\$4,620). Project expenses for the year \$6,081, but more grant money is due soon.

## Annual Reports

- **Profit and Loss:**
  - Loss recorded at \$28,216. Significant elements:
    - \$28,875 to Heritage Building Restoration – Traill Fountain Project.  
Grant monies were received over two financial years: \$17,500 (2022/2023)  
\$14,000 (2023/2024)
    - Weekly Nursery Sales shows a drop of \$4,875
    - \$3,834 write of Asset Uniforms with Depreciation of Furniture and Equipment
  - Significantly increased Revenue for Botanical Art and Events and Tours with increased expenses
  - Administration, Operating and Staff expenses have been well held
- **Balance Sheet:**
  - Total Equity is \$350,586 cf \$378,802 last year
  - The Plant Stock in the Friends' Nursery is valued on June 30 each year and listed as a Current Asset. The movement in the valuation of the Plant Stock (increase of \$6,862) is listed in the Profit and Loss
  - 'Provision for Annual Leave' and 'Provision for Long Service Leave' liabilities are recognized and allocated against the appropriate expense accounts of 'Annual Leave Provided' and 'Long Service Leave Provided'.
  - The Term Deposits are evidence of a long history of careful financial management since the Friends began in 1985. These funds ensure a secure future for the Friends and indicate the ability of the Friends to continue support, regardless of the annual return of any particular year.
  - Volunteer Uniforms are allocated to Non-current Asset 'Furniture & Equipment' and depreciated as an immediate write-off due to small value per unit (less than \$300)

## Budget

- My apologies that I have not provided a Budget 2024/2025 to the Committee to consider for presentation to this meeting. My intention is to draft this in the near future.
- We will continue to strive to generate income and to contain our costs and investigate new strategies for managing both income and expenses, while also considering member benefits.
  - The Committee proposes that Subscription Fees will increase slightly (about 8.5%) for 2025/2026. Membership subscriptions have not increased for some years.
  - Our Marketing strategy is under review.
  - Prices for the Plant Nursery, Botanic Art and Events, Tours and Workshops are reviewed annually and at planning stages - all have member discounts.
- Staff and volunteer expenses continue to be monitored closely, resources will be used carefully, and training opportunities will again be provided.
- Interest rates are low, and this will continue to have an effect on revenue.

## General Comments

- Sincere thanks to the members of the Committee for their continual support over the last year.
- Very sincere thanks to our two staff members in our office. Sally and Tracey manage all of the receipting of monies and ensure that our record-keeping of all financial transactions are completed accurately and promptly....as well as a million other 'non-financial' chores.
- I am confident that procedures are in place that ensure current and future financial management will be compliant and as straightforward as possible for future Committees.

*Judy Fyfe, FGBG Treasurer*



# HONORARY LIFE MEMBER AWARDS 2024



The Friends' Committee recommended the following members be awarded honorary Life Membership for their outstanding volunteer contribution to the Friends over many years.

**From the Left**, Denise Feldman presenting awards to:

**Jenny Stein**

**Jenni Smith**

**Allison and Ian Martland**

## BECOME A MEMBER

Members have the opportunity to meet Friends with similar interests, from the region to enjoy the many activities associated with the gardens.

- Learn more about the Geelong Botanic Gardens and Eastern Park
- Join social activities, guest speakers, film nights and tours to other gardens and places of interest
- Use the Botanic Gardens Reference Library and Friends' Lending Library
- Receive the *Members' Update* (monthly) and *Jubaea* Newsletter (3 per year) outlining recent news, what's happening in the Gardens and provides a program of events and activities for the coming month
- Receive discounts from selected local businesses (current membership card required)
- Receive a *Member's Discount* on most Friends' events and activities including the Geelong School of Botanical Art program, merchandise and purchases from the Friends' Nursery (current membership card required).

**BECOME A MEMBER ONLINE AT [www.friendsgbg.org.au](http://www.friendsgbg.org.au)**

**or pop into the Friends' office at the rear of the gardens. 03 5229 0071 [info@friendsgbg.org.au](mailto:info@friendsgbg.org.au)**

## FGBG GIFT FUND

The Friends of Geelong Botanic Gardens Gift Fund is registered with the Australian Taxation Office to receive donations, which are tax-deductible. The Gift Fund currently has \$ **415,506.98**. This Fund may only be used to support special projects and programs within, and initiated by, Geelong Botanic Gardens. It may not be used to support the Friends or Friends activities.

**To make a donation to the GIFT FUND online**  
go to the Friends' website [www.friendsgbg.org.au](http://www.friendsgbg.org.au)



### Editorial Team:

Luanne Thornton, Anne Bourke, Tracey Tilbury.

The **Jubaea Newsletter** is printed at Minuteman Printing, Geelong.

**Jubaea Newsletter** is published by the Friends of Geelong Botanic Gardens Inc.  
PO Box 235, GEELONG 3220

**Friends' Office Hours:** Mon-Frid 9.00 am to 2.00 pm

**Website:** [www.friendsgbg.org.au](http://www.friendsgbg.org.au)

### FGBG Committee 2024-25:

President: Charles Pond

Vice Presidents: Jan Cheyne and Carol Richardson

Treasurer: Judy Fyfe

Secretary: Rosslyn Jablonsky

**Committee Members:** Tilly Brunton, Barrie Satchell, David Murdoch, Chris Balaam, Belinda Taylor

**Patron:** Stephen Ryan

**Email:** [info@friendsgbg.org.au](mailto:info@friendsgbg.org.au)

©Friends of Geelong Botanic Gardens Inc. 2024. The views expressed by contributors are not necessarily those of the Friends of Geelong Botanic Gardens or those of the Geelong Botanic Gardens. Neither the FGBG nor the GBG accepts responsibility for statements made or opinions expressed, although every effort is made to publish reliable information.

# DIARY DATES AT A GLANCE



JUBAEA SUBMISSIONS for the next Edition are due by 6 January 2025.  
All articles including high resolution photos (jpeg) can be sent to the FGBG Office

## OCTOBER

### DANDENONG RANGES COACH TOUR

**Tuesday 1 October, 7.45 am to 6.15 pm**

We will visit the Dandenong Ranges Botanic Gardens at Olinda, to see the Cloud Forest Conservation Garden and tour their Chelsea Garden. Then on to Cloudehill gardens, nursery and garden shop. Bring your own picnic and drinks as we lunch at nearby Hamer Arboretum. We move on to Kawarra Native Botanic Gardens and nursery at Kalorama, for afternoon tea before heading home. Price includes coach travel, entry fees, morning and afternoon tea. \$85 members and \$95 non-members.

### SATURDAY PLANT SALE

**Saturday 12 October, 10.00 am to 3.00 pm**

Come and be tempted by our Salvias, Pelargoniums, Australian Plants, Perennials, Grasses and Succulents, sourced from our beautiful Botanic Gardens. PLANT NURSERY LOCATED at the Rear of the Gardens. Entry is from the Gardens only. Access can be arranged from Nursery for pickup of plant purchases.

### THEMED GUIDED WALK – INDIGENOUS PLANTS IN OUR GARDENS

**Sunday 13 October, 2.00 pm. Meet at the Front Gates**

Geelong Botanic Gardens has a wide range of indigenous plants, from imposing trees to tiny ground covers. Many are also useful plants for your garden. Come for a walk to learn about how these plants have been used over the years: for food, medicine, tools, decoration, music and ceremonies. Gold coin donation is appreciated.

### THROUGH THE GARDEN GATES

**Tuesday 29 October, 10.00 am to 4.30 pm**

Our popular self-drive tour of 4 gardens this year is in the Bellarine Peninsula. They range from a large country garden with expansive vistas, a stylish newly established lawned garden and two lushly planted town gardens, both featuring beautiful garden rooms. The tour ends at the final garden with afternoon tea and sale of plants propagated from members' own gardens. BYO picnic lunch to eat at the second garden or purchase lunch along the way. \$40 members and \$50 non-members. Bookings Online [www.friendsgbg.org.au](http://www.friendsgbg.org.au) or at the Friends' Office 5229 0071

### WORKSHOP: INTRODUCTION TO BOTANICAL ART USING GRAPHITE AND COLOURED PENCIL: Tutor, Amanda Ahmed

**Weekend #1:** Introduction to Drawing with Graphite  
Saturday 12 and Sunday 13 October

**Weekend #2:** Introduction to Drawing with Coloured Pencil  
Saturday 26 and Sunday 27 October

## NOVEMBER

### THEMED GUIDED WALK – OUT OF AFRICA

**Sunday 10 November, 2.00 pm. Meet at the Front Gates**

Plants from Africa reflect huge differences in climate, topography and ecology.

Our collection comes from widely diverse areas of the continent, tell stories of their habitat, and the creatures and people that inhabit it. Gold coin donation is appreciated.

### FRIENDS' CHRISTMAS PICNIC

**Wednesday 27 November, 1.00 pm to 3.00 pm**

This year the Friends' annual Christmas picnic in the Gardens will be held on Wednesday 27 November from 1.00 pm to 3.00 pm at the Visitor Facility, to accommodate those who have been unable to attend evening celebrations in the past. All members and their partners are invited to come and share your support in an afternoon of fun and friendship.

BYO picnic and drinks. BYO alcohol is permitted, and tea/coffee will be provided. A silent auction of plants and assorted items will add to the fun, as well as a raffle sold and drawn on the day to members and their guests. Free Event.

RSVP to the Friends' Office by Friday 22 November or book online at [www.friendsgbg.org.au](http://www.friendsgbg.org.au)

## DECEMBER

### THEMED GUIDED WALK – POLLINATORS

**Sunday 8 December, 2.00 pm. Meet at the Front Gates**

The pollination of plants is integral to their reproduction and survival. Come and learn about the differing ways native plants are pollinated. Hear how native plants can provide habitat for local native fauna to encourage pollinators such as small birds, butterflies, native bees, lizards, frogs and bats. Gold coin donation is appreciated.

### DURING THE HOLIDAYS

- **No Guided Walk on Wednesday 25 December and Sunday 29 December**
- **For Plant Nursery dates, check the Friends' website in December.**
- **The Office will be closed from Monday 23 December.**

## JANUARY 2025

- **The Office will re-open on Monday 6 January at 10.00 am.**