



Spring Creek a case study

Don't Destroy What You Came To Enjoy



2010

View from Southside to Bells 1982



Rufous Bristlebird
Dasyornis broadbenti



Swamp Antechinus
Antechinus minimus
maritimus

Summary table

Victorian State Government DEPI updated advisory list for each vertebrate class for 2013

And 2003

Where FFG = Flora Fauna Guarantee Act 1988

Where EPBC = Ecological Protection and Biodiversity Conservation Act 1999

Group Category

	Total	FFG	EPBC
Mammals	62	41	28
Birds	130	74	26
Reptiles	47	29	7
Amphibians.....	18	11	9
Fishes.....	36	22	11
Total (2013)	293		
Total (2003)	275		



Carbon footprint + human lifestyle footprint = Ecological footprint



Just two chicks successfully hatched between Thompsons Creek and Aireys Inlet in 2012. This poor recruitment rate is a reflection of the enormous pressure placed on breeding birds. **Listed under the FFG and as Vulnerable in EPBC**

CENTER *for*
BIOLOGICAL
DIVERSITY



**Armstrong Creek
Growth Area**

Armstrong 1

Warralily 3

80



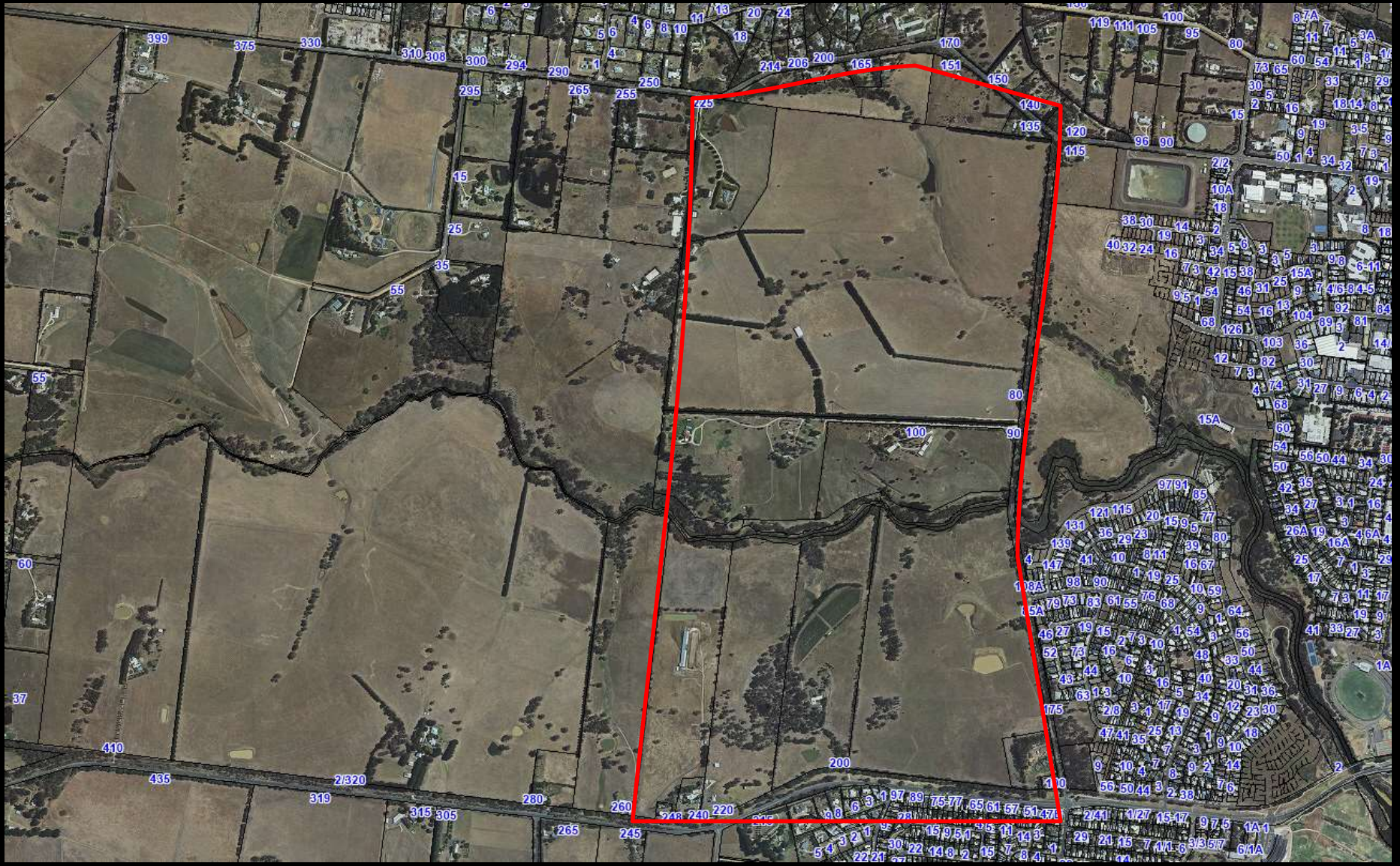


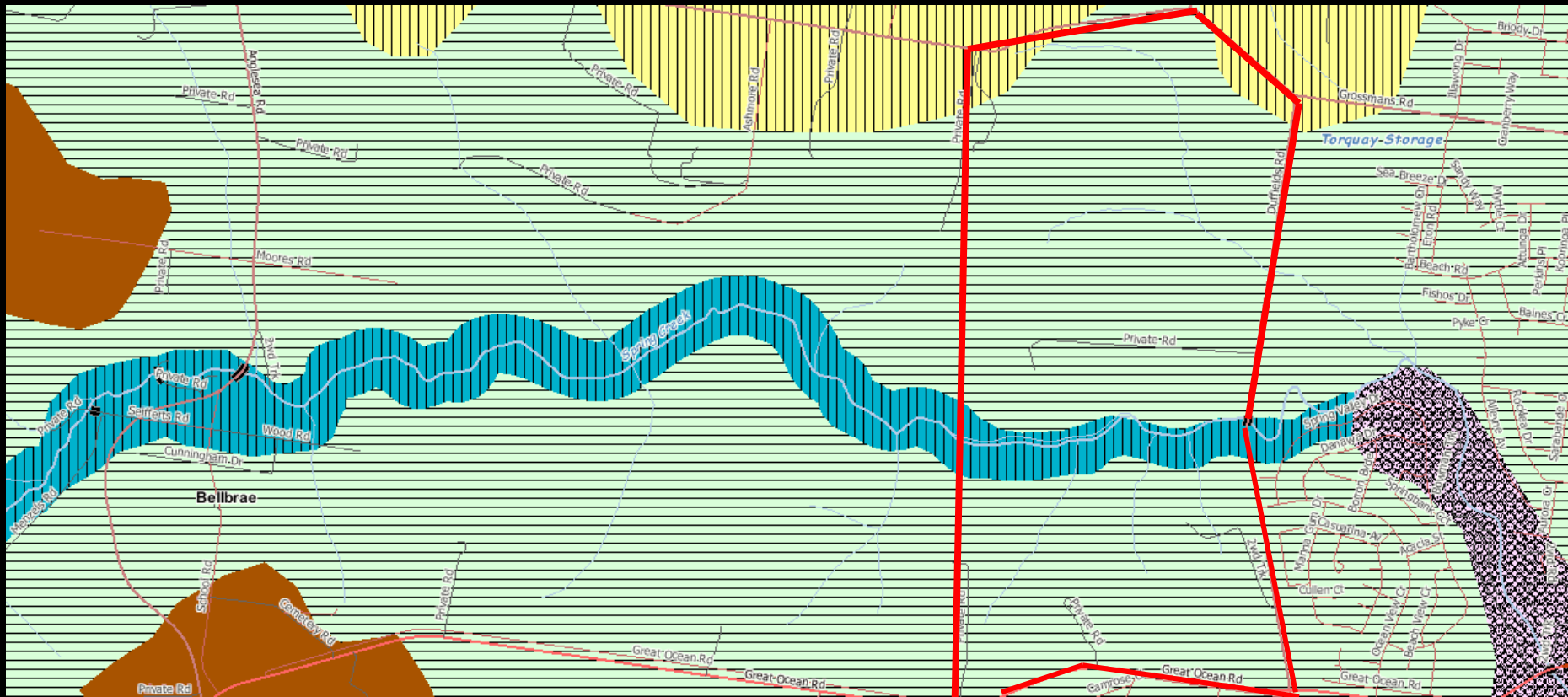
Red Rally to save
Spring Creek 2009



Followed by another
community rally
outside Council offices
in 2011 as Council
voted in favour of
Spring Creek.







Ecological Vegetation Classes:

- Yellow- Heathy Woodland/ Sand Heathland Mosaic
- Light green with horizontal lines- Grassy Woodland
- Dark Blue- Swampy Riparian Woodland and Spring Soak Woodland Mosaic
- Inside Dark Blue (not shown) Tall Marsh
- Circles- Coastal Alkaline Scrub
- Dark Brown- Lowland Forest



Climate Change



Habitat



Economy



Southern Brown Bandicoot: Listed as Endangered under EPBC



The Growling Grass Frog – listed as Vulnerable under EPBC

Threatened species



Grey Goshawk- white phase: Listed as Vulnerable EPBC Act 1999.
Habitat: coastal closed forests



Eucalyptus leucoxylon ssp. bellarinensis - listed as Threatened under FFG

Powerful Owl – listed as Threatened under FFG



Plan on public display at Shire above and our alternative community plan right

A COMMUNITY VISION FOR THE FUTURE

SPRING CREEK PRECINCT STRUCTURE PLAN



Proposed by the Torquay community as a positive response to the Draft Structure Plan currently on exhibition for comment.

Proposed amendments to the Draft Structure Plan:

1. Create a vegetation buffer along western boundary – 20m buildings exclusion easement on private properties;
2. Provide open space offset to Spring Creek 100m on the south side and 75m on the north side, reflecting its high cultural (aboriginal) and ecological sensitivity and to provide offsets from Registered Aboriginal Places as recommended in the Cultural Heritage Management Plan;
3. Create a transition to rural activities with low density lots only along the western boundary, consistent with low density residential zones to the north;
4. Allow vehicle access off Grossmans Rd at Messmate Rd only, with no access point near the western boundary;
5. Construct shared pathways linked under Duffields Rd to provide grade-separated access along linear reserves to ensure pedestrian safety;
6. Shared pathway circuit linking school and linear open space along valleys/waterways, and along the 'old' Great Ocean Rd.
7. Proposed open space linkages along 'Jear Niu Roc' Creek and Spring Creek join to create a connected habitat corridor and better linear open space outcomes.
8. Create a community food, cultural, and health precinct incorporating sustainable community buildings and gardens, medical / complementary health, cafe and local food hub around the existing vineyard to support commercial, social and employment outcomes.
9. Smaller 'smart' lots and medium-density residential development in north-facing location below the ridge line.
10. Create habitat corridor to link remnant vegetation on Great Ocean Rd with Yellow Gum Woodland.
11. No road connection to Great Ocean Road.
12. Tree reserve around perimeter creating visual screen, especially important on Great Ocean Rd. No direct property access to perimeter roads.

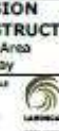
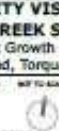
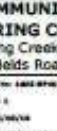


PRINCIPLES

- Western boundary of precinct forms permanent town boundary.
- Reflect the importance of nature conservation as an important part of planning for our community.
- Emphasise the village, coastal, rural, and surfing character of Torquay and Jear Juc.
- Precinct to use 100% renewable energy by utilizing a mix of roof top and public open space, eg. Solar and grid connected solar modules on street light poles.
- Maximise on-site water storage.
- Third pipe recycled water technology.
- Design guidelines requiring all landscaping to be based on the original Yellow Gum woodland vegetation type, including *Scaevola* Yellow Gums used as 80% of all street trees.
- Children's interaction with nature and safe movement through the precinct.
- No light pollution from public lighting. No light pollution from public lighting (to safeguard wildlife and to preserve night sky).
- Ensure good passive solar design.
- Maximum height limit for commercial, retail and domestic to be 7.5 metres between top of structure and natural ground level.
- Encourage public / private partnerships to facilitate these principles.

CREATED BY

3228RA
LOCAL RESIDENTS ASSOCIATION



COMMUNITY VISION
SPRING CREEK STRUCTURE PLAN
Spring Creek Growth Area
Duffields Road, Torquay

Issued by the 3228RA - 30/1/2016
Version 1
Date: 30/1/2016
Landscape Architecture
www.perryhills.com.au



Growth!

Is bigger better?

Join the discussion, and hear Australia's leading experts explain the issues.

MC: Rod Quantock

- **Emeritus Prof. Ian Lowe** - Griffith University: *Bigger or Better*
- **Prof. David Karoly** - IPCC lead author: *"Climate change & coal"*
- **Geoff Carr** - Ecology Australia: *'Decline in nature here and everywhere'*
- **State election Q and A for candidates in the South Barwon electorate.**

Date: Sunday 16 November, 2-5.30pm

Where: Quiksilver Auditorium, 27 Baines Crescent, Torquay

Entry: Gold coin donation

For further information contact:

Email: info@sceg.org.au

Phone: 0425 752 648

