

# SOMETHING'S HAPPENING!

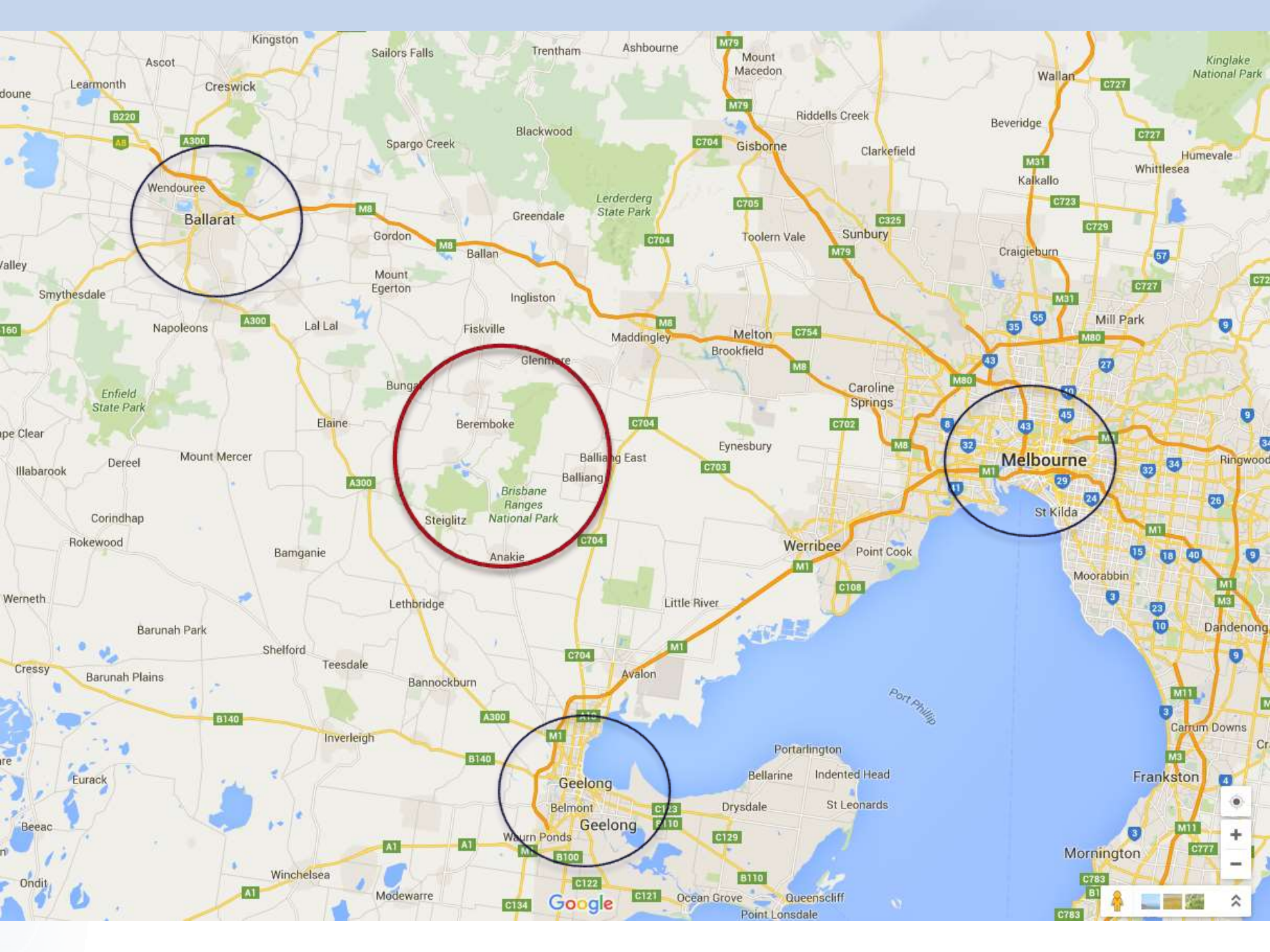
## Citizen Science in the Brisbane Ranges

Cathy Powers

Friends of the Brisbane Ranges

# FACT 1



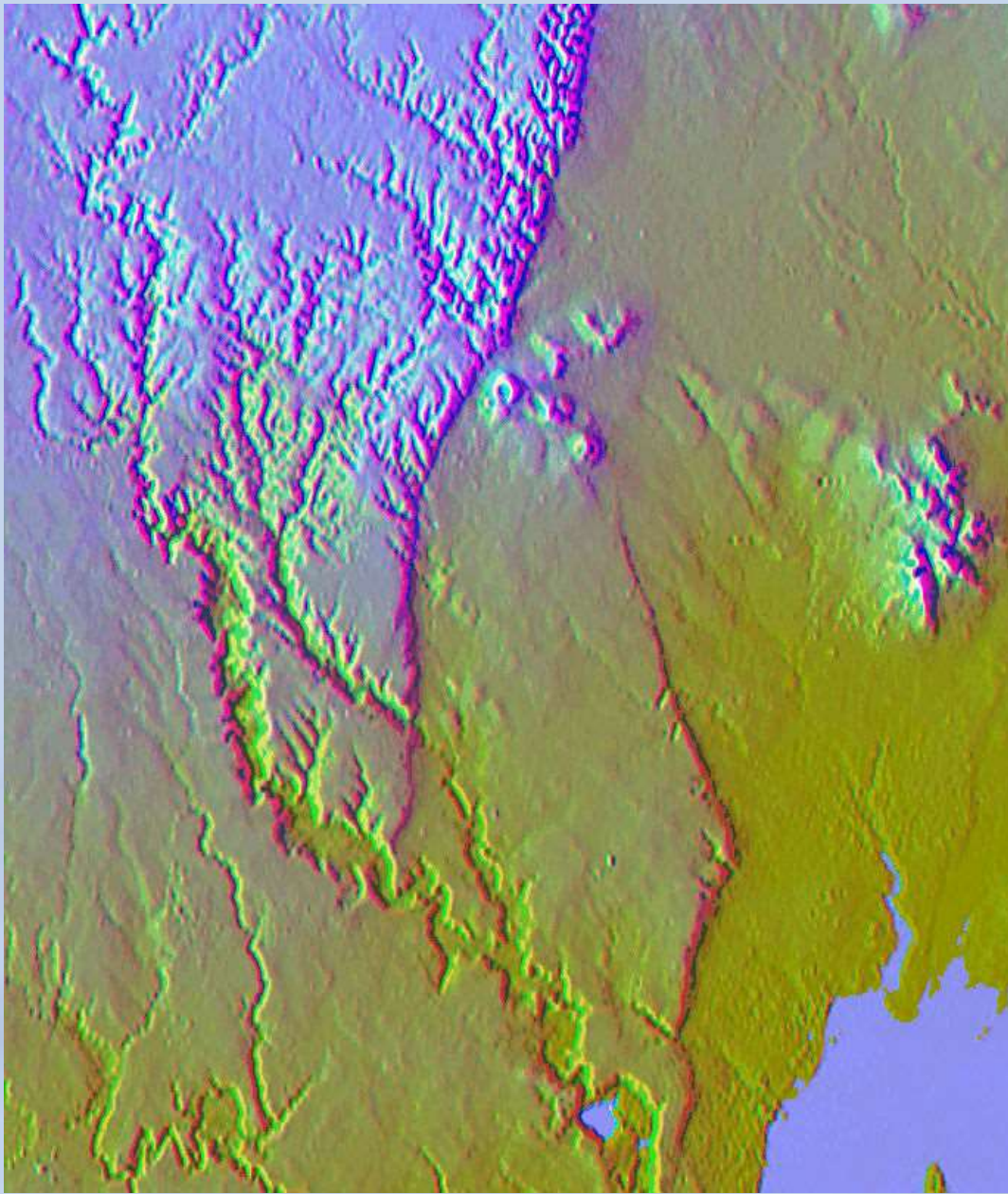


Wendouree  
**Ballarat**

Beramboke

**Melbourne**  
St Kilda

Geelong  
Geelong



University of Melbourne Image directory



Museum Victoria image

The dominant geological feature to the west of Melbourne is the Rowsley Fault. East of this fault lies the plains surrounding Port Phillip Bay while to the west is the uplifted plateau that extends to Ballarat.

GOLD – discovered in 1853, by 1860 there were over 600 miners in the Steiglitz area and the last boom occurred in the 1890s.



Local:

- Tools
- Blacksmith Forge
- Boilers
- Mine Shafts

## Timber Harvesting

Ballarat:

In the big mines in Ballarat, using often 4 or 5 boilers in a row, eight tonnes of wood burned in a shift.



## Wood Uses

Inhabitants:

- Heating
- Cooking

Settlement:

- Buildings

# Timber clearing



Pastoral land  
Clearing for grazing



Stony Creek Dam  
Aqueduct system



Railroads (image from Rail Heritage WA)

# Slate Quarry



Flora clearing:

- Roads
- Machinery

(reclamation)

Stopped when the National Park was declared in 1973







Changes in our climate -  
Models based on predicted impacts

# Gathering and documenting information to be used for long-term monitoring

## What we know:

- Location of at least one plant
- Identification features

## What we need to know:

- Distribution parameters
- Habitat adaptation
- Impacts from changing climate

## Possible intervention strategies:

- Propagation
- Protection
- Reintroduction



## ENDEMIC

*Grevillea steiglitziana*  
(Rowsley Fault)

*Pultenaea gunnii*  
*subsp. tuberculata*  
(Brisbane Ranges only)

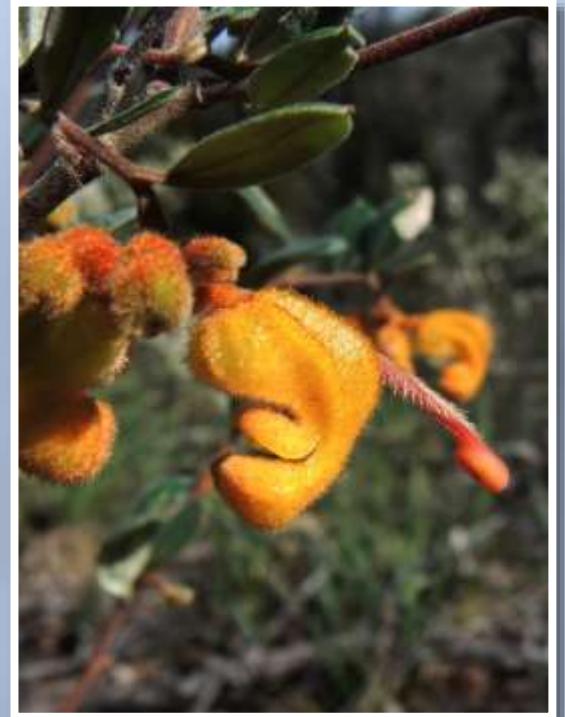




## DISJUNCT

*Leionema  
lamprophyllum subsp.  
obovatum* (>350km)

*Grevillea chrysophaea*  
(>200km)



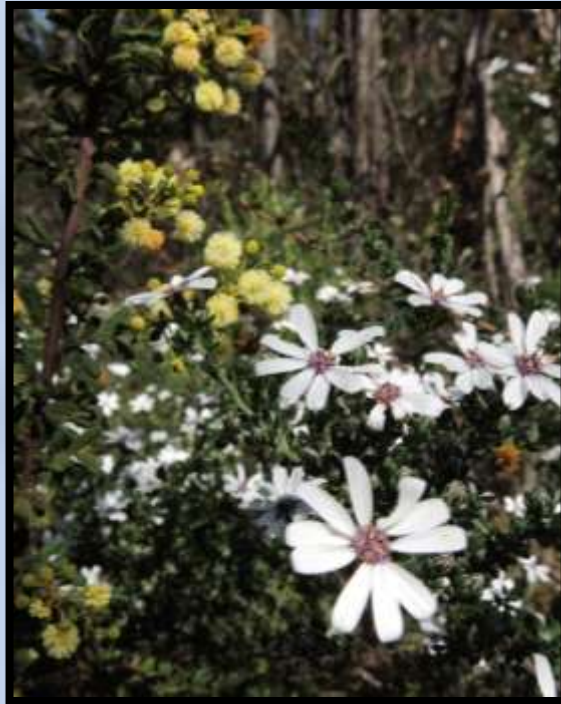


*Pomaderris elliptica* var.  
*elliptica*

LOCALLY  
RARE  
or  
UNUSUAL

*Prostanthera decussata*

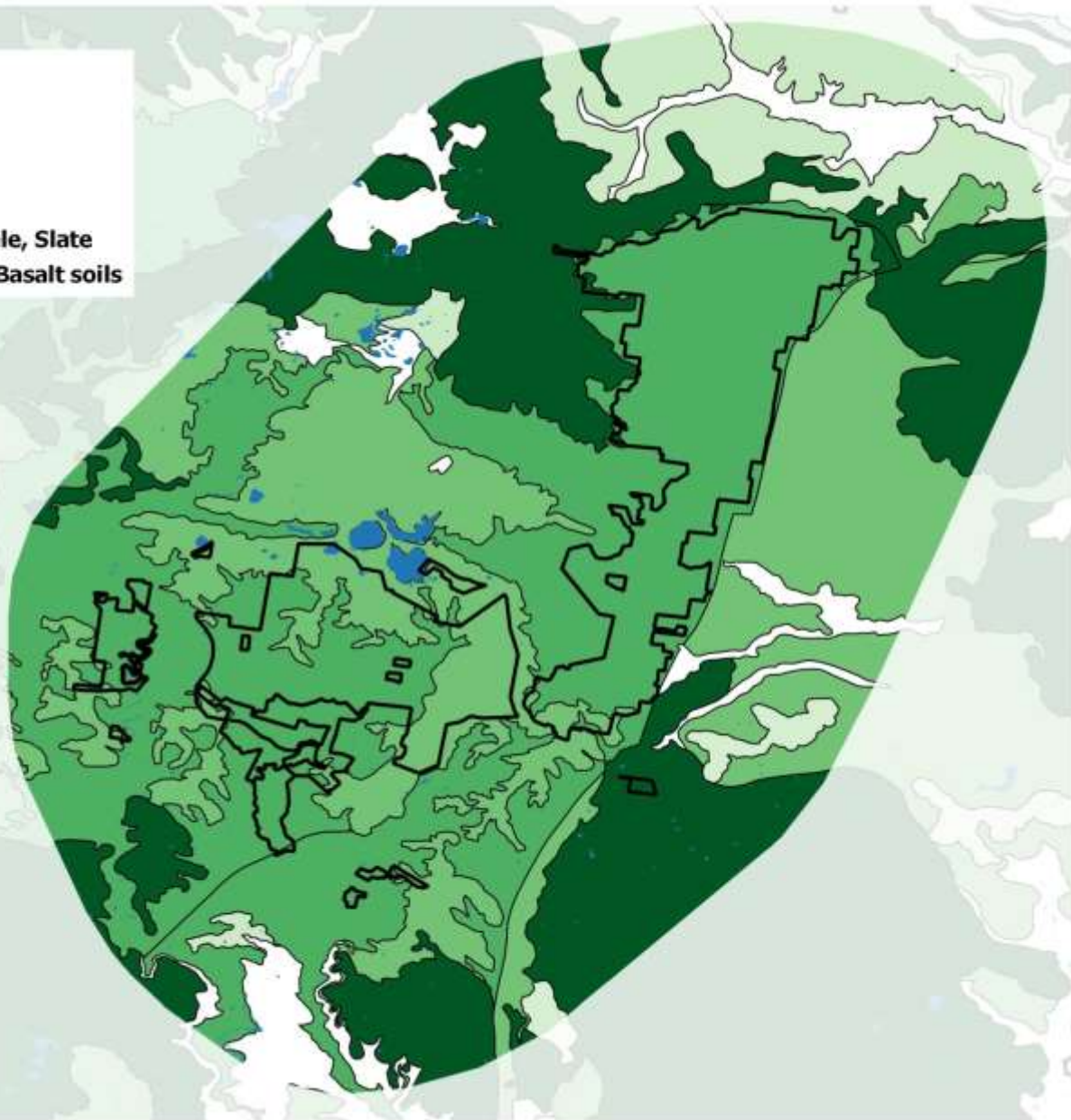




*Phyllanthus hirtellus*; *Pimelea octophylla*; *Pultenaea daltonii*; *Olearia minor*; *Acacia aspera* subsp *parviceps*; *Pomax umbellata*

## Geology

- Devonian - Granite
- Eocene - Sediment, Silt, Clay
- Miocene-Pliocene - Sand, Gravel, Clay
- Ordovician - Sandstone, Mudstone, Shale, Slate
- Tertiary-Quaternary - Newer Volcanic, Basalt soils



**Mudstone, Shale** = drier,  
rocky, scrubby  
**Sandplains** = heathy, open  
woodland  
**Basalt** = Surrounds



Record a species location

species

tag / aspect

Collection  
Brisbane Ranges - significant flora species

Starred  
n/a Starred

Media  
n/a Any Photos Videos Audio

None

Identification  
n/a Identified Unidentified

Spp. level id.

Order  
Date Created Updated

Date Range  
n/a Week Month Last Mth. Custom

188 items

Map Options

Bounds

Mode  Marker clustering  All markers  Heat map

eg. Melbourne, Victoria



ALA  
records

'Citizen Scientist'  
contributing to a  
NatureShare  
collection

Providing information,  
identification techniques  
and confidence to be  
involved

A convergence of interests,  
participants and entities such as  
the botanic gardens to achieve a  
realistic outcome



# THE BIG PROJECT

GROUP

INDIVIDUAL

ALL 26 SPECIES

SELECTED SPECIES

ONE SPECIES

SPECIFIC AREA

PRIVATE  
PROPERTY

SPECIFIC HABITAT

ALA  
records

'Citizen Scientist'  
contributing to a  
NatureShare  
collection

Providing information,  
identification techniques  
and confidence to be  
involved

A convergence of interests,  
participants and entities such as  
the botanic gardens to achieve a  
realistic outcome





NatureShare

Species

Observations

Collections

Help

koolah

Brisbane Ranges - significant flora species Edit

by Chris Lindorff and Cathy Powers

Overview

Species 26

Observations 68

Members 5

descriptor, feature, category, t

← Previous **1** 2 3 4 5 6 7 Next →

194 items (page 1 of 7) (100 per page)

*Pultenaea gunnii* subsp. *tuberculata* Golden Bush-pea

29 Mar 2016 • -37.9,144.3 • Chris Lindorff



A collection of significant flora species found within the Brisbane Ranges National Park and nearby landscape. These species are chosen for this collection if they are: i. endemic to this area; ii. a disjunct population; or iii. locally very rare or unusual. Not all rare and threatened species for the Brisbane Ranges will be included in this collection.

It is hoped that, over time, a better

### Our services

The Atlas of Living Australia's mission is to provide creative tools that help anyone contribute their knowledge to the public. From the citizen scientists to the field experts who are contineously capturing information, to the casual observers recording a sighting for the first time, the Atlas of Living Australia provides elegant solutions that set new standards for recording data.

The Atlas of Living Australia is a collaborative, national project that aggregates biodiversity data from multiple sources and makes it available and usable online.

Sharing biodiversity knowledge to shape our future.

**NCRIS**  
National Research  
Infrastructure for Australia



An Australian Government Initiative

#### Citizen Science →

- About CS in the ALA
- DigiVol Portal
- Record a sighting
- Upload media

#### Atlas Features →

- Dashboard
- Sandbox
- API
- Atlas Mobile Apps

#### Atlas Data →

- Sensitive Data
- Data integration
- Dataset upload
- Species list upload

#### Contact Us →

- Communications
- About the Atlas
- Education resources
- FAQ

The Atlas of Living Australia is a node of the Global Biodiversity Information Facility (GBIF).



This site is licensed under a Creative Commons Attribution 3.0 Australia License.



Provider content may be covered by other Terms of Use.



Anytime

Anybody

| MONTHS OF THE YEAR |           | Days of the Week |
|--------------------|-----------|------------------|
| January            | July      | Monday           |
| February           | August    | Tuesday          |
| March              | September | Wednesday        |
| April              | October   | Thursday         |
| May                | November  | Friday           |
| June               | December  | Saturday         |
|                    |           | Sunday           |

*Exciting*



# OUTCOME

Setting a benchmark  
knowledge bank

*Valuable*

Determining management  
actions to ensure the survival  
of threatened populations

*Challenging*



VISIT:

[natureshare.org.au](http://natureshare.org.au)

CONTACT US:

[brisbanerangesproject@gmail.com](mailto:brisbanerangesproject@gmail.com)