

Garden Highlights, March 2018

1. Fruit is maturing on many trees and shrubs. In late March and early April some will change from green to red, orange or yellow. In addition to the fruit mentioned below, the **map** shows a few other plants with maturing fruit.

2. Female **Maidenhair Trees *Ginkgo biloba*** trees produce fleshy cones that turn yellow when ripe. Our tree has only produced fruit in recent years and then only on one or two branches. For much of its 160 year life it was thought to be male. When roasted the nuts are edible, but many find the smell of the flesh of the fruit repulsive.

3. In the middle of the oldest part of these gardens stands a tall **Chilean Wine Palm *Jubaea chilensis***. Look way up near the foliage for its maturing green fruit. When ripe, the orange fruit fall the ground. Inside is a nut like a small coconut.

4. The **Glastonbury Thorn Tree *Crataegus monogyna* var. *praecox*** is a variety of the Common Hawthorn that was considered holy where it grew at Glastonbury Abbey, England. James Austin brought a cutting from Glastonbury Abbey in 1899 and planted it in his Avalon garden. It is believed that this tree was grown from a cutting from the tree in Avalon. The red fruit (haws) are sometimes made into jelly.

5. These gardens do not use insecticides. Important in controlling insects are the birds and spiders. In late summer and autumn, **leaf curl spiders** set up their webs to catch flying insects. To be close to where an insect would be caught, the spider remains near the middle of the web. To protect itself from birds, it carries a leaf to its resting spot and curls the leaf to be almost completely enclosed.

What's on in March 2018

(Booking and more details on Friends website or office)

Themed Guided Walk: 'Silver and Gold' (Silver and Perennial borders)
Sunday 11 March 2:00 pm. Gold coin donation.

Discovery Table, Sundays 4 and 18 March 1:00 - 3:00 pm.

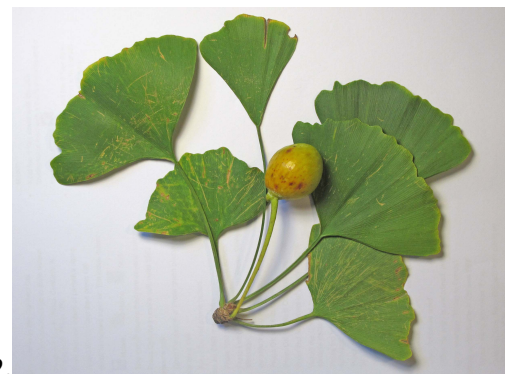
Royal Botanic Garden, Cranbourne ferry and bus tour
Monday 19 March. Book by 14 March.

Winter Weekend Plant Sale 24 and 25 March, Friends Nursery
10:00am - 4:00pm. Also open Wednesdays 9:30am - 12:30pm.
Of the plants highlighted, *Jubaea*, *Ginkgo* and *Aesculus* may be available at the Friends Nursery.

Free Guided Walks, Wednesday 11:00am, Saturday and Sunday 2:00pm.
See the **African Succulents** display in the Curiosity Cabinet.

A highlights is the huge **Elephant's Foot Yam *Dioscorea elephantipes*** with tiny flowers early in March

The **Tea House** is open every day.



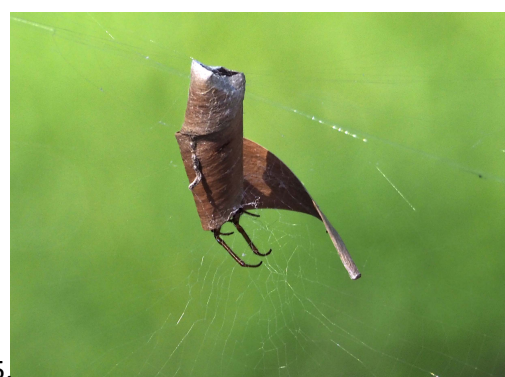
2.



3.



4.



5.

Over page: Map showing plant locations

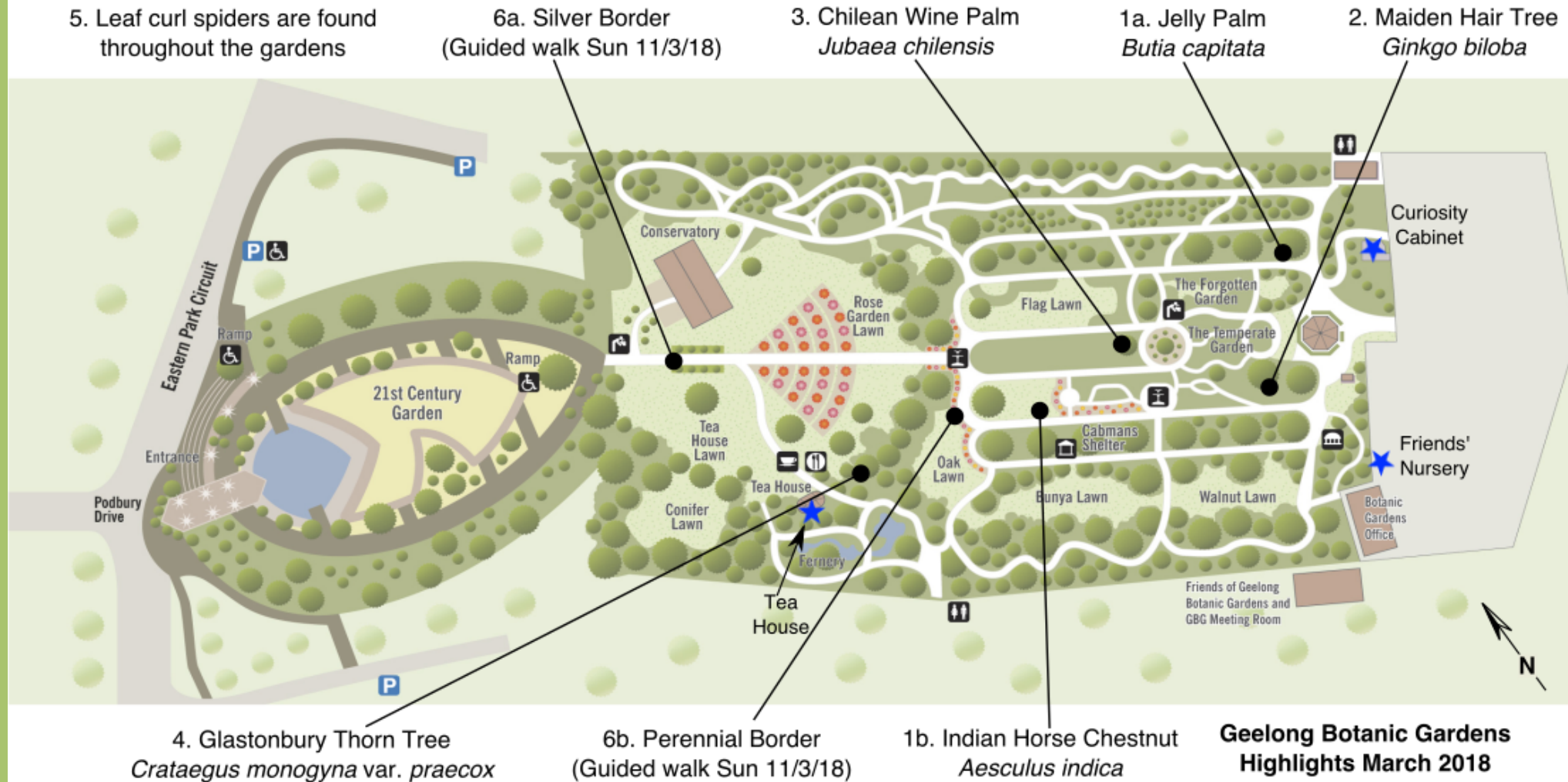


www.friendsgbg.org.au

Phone: 5222 6053

www.geelongaustralia.com.au/gbg/

Geelong Botanic Gardens Map



Geelong Botanic Gardens Highlights March 2018

