

Garden Highlights, September 2016

What would our gardens and food be like without Chinese plants? They would be much poorer.

The Chinese have been cultivating plants for more than 4,000 years. Many of these were from China but some originated from countries surrounding China. Our gardens and food benefit from Chinese plant breeding over the millennia. Foods plants of Chinese origin include Peach, Apricot, Kiwifruit, Rhubarb, Cherry, Citrus, Tea and Rice.

These gardens have many Chinese plants. Some are marked on the map on the back. You can learn more by coming on the Discovery Walk on 11 September. See 'What's on', below.

1, 2. The Camellia Walk, in the shade of the line of Bunya Pines *Araucaria bidwillii*, has **Camellias** (photo 1), Azaleas, Magnolias and **Fragrant Sweet Box** *Sarcococca ruscifolia* (photo 2). Each of these plant groups has representatives from China. Varieties of these garden plants may be available in the Friends Nursery. These gardens don't grow the most-widely planted Camellia, *Camellia sinensis* the Tea plant.

3. The star-shaped pods and seeds of Chinese Star Anise *Illicium verum* are processed to make spice and oil, used for flavouring food, perfuming personal products and the manufacture of Tamiflu flu medicine. In these gardens the **Japanese Star Anise** *Illicium anisatum* is in flower (photo 3). The pods and seed of the Japanese Star Anise are poisonous.

4. The **Chinese Windmill Palm** *Trachycarpus fortunei* (photo 4) is a palm that that can withstand cold climates in China and Japan, down to -15°C. It suffers in hot, wet weather. Although it is a popular medium-sized palm for gardens, it is widely planted for making rope and coarse cloth from the sheaths that surround emerging leaves.

What's on in September 2016

Discovery Walk: 'Camellias and other Chinese Wonders',
Sunday 11 September 2:00 pm. Gold coin donation.

Discovery Table, Sunday 18 September 1:00 - 3:00 pm.

Botanical Art Workshop 'Gold Leaf', Weekend 24-25 September.
Book with the Friends office.

The Friends' Nursery is open on Wednesdays 9:30 am - 12:30 pm.

Free Guided Walks, each Sunday 2:00 pm, Wednesday 11:00 am.

The Curiosity Cabinet is displaying 'Super foods' and pulses.

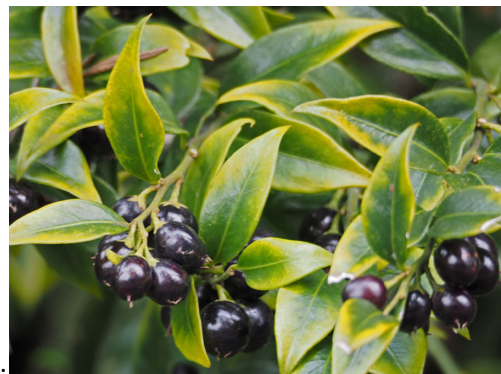
Friends Spring Plant Sale, Weekend 29-30 October.

The Tea House is open every day.

1.



2.



3.

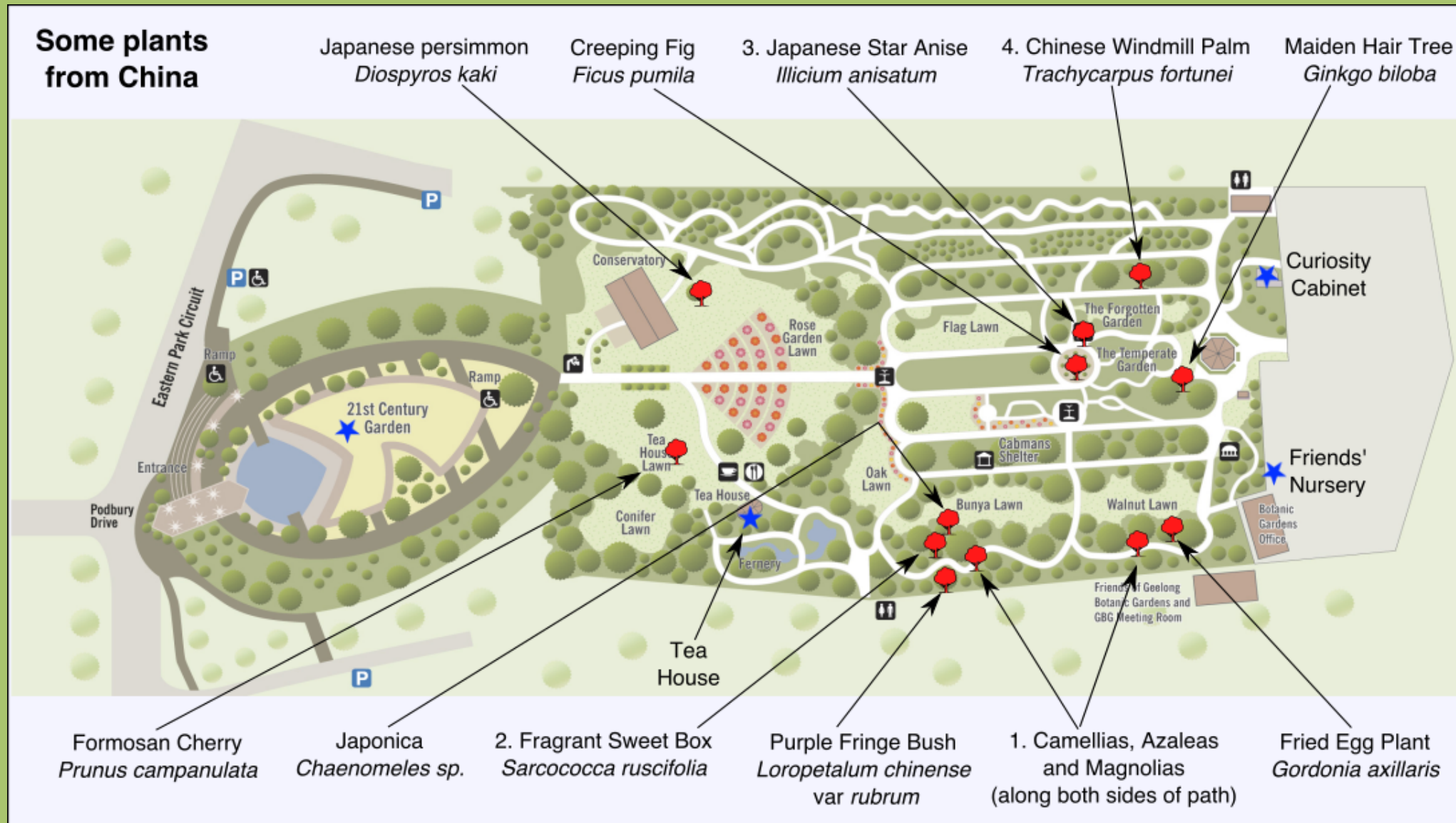


4.



Over page: Map showing these plants

Geelong Botanic Gardens Map



This information was developed by the Volunteer Guides
Friends of Geelong Botanic Gardens

www.friendsgbg.org.au
www.geelongaustralia.com.au/gbg/